

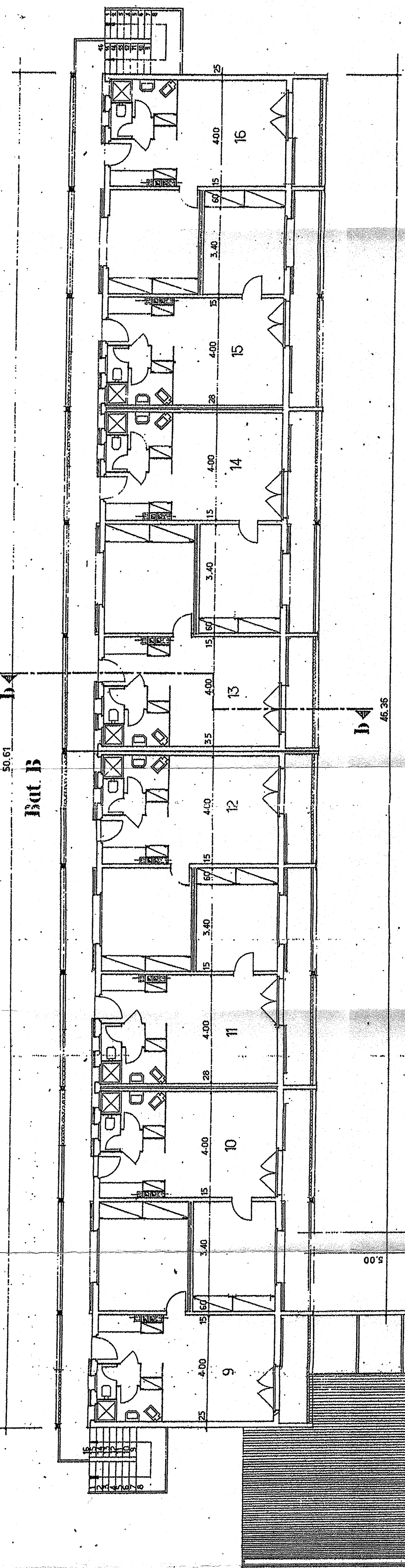


ETAGE

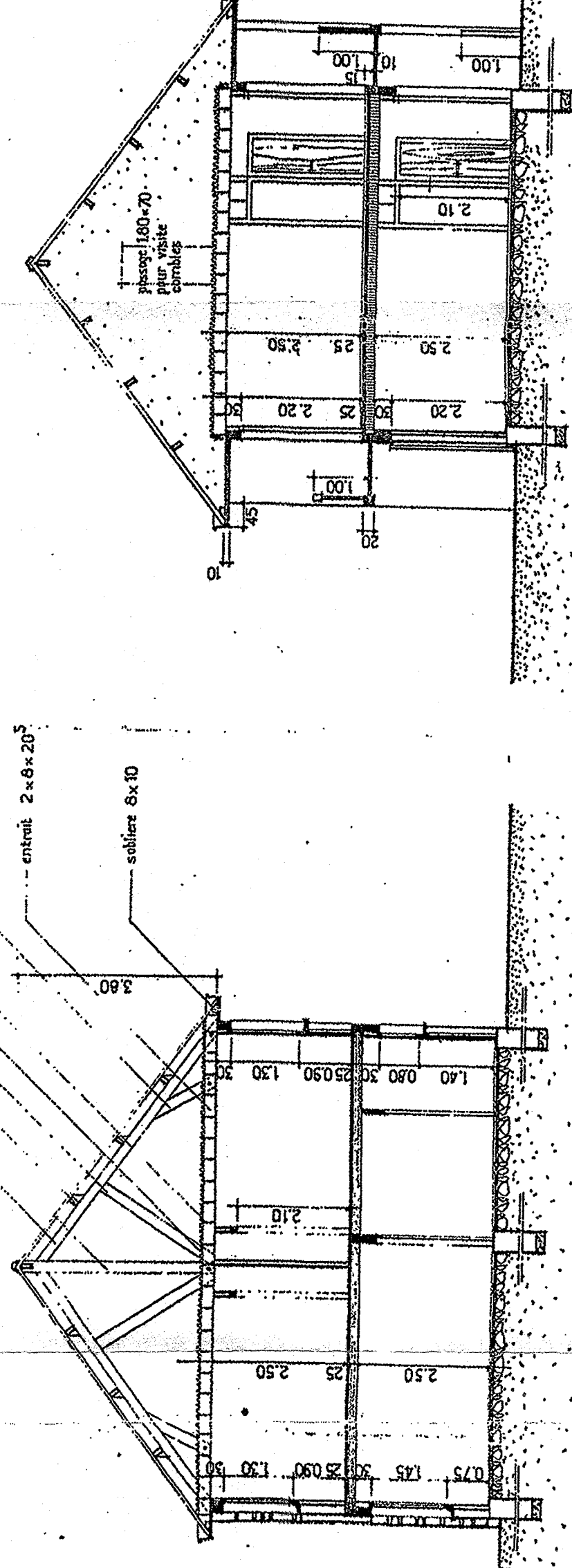
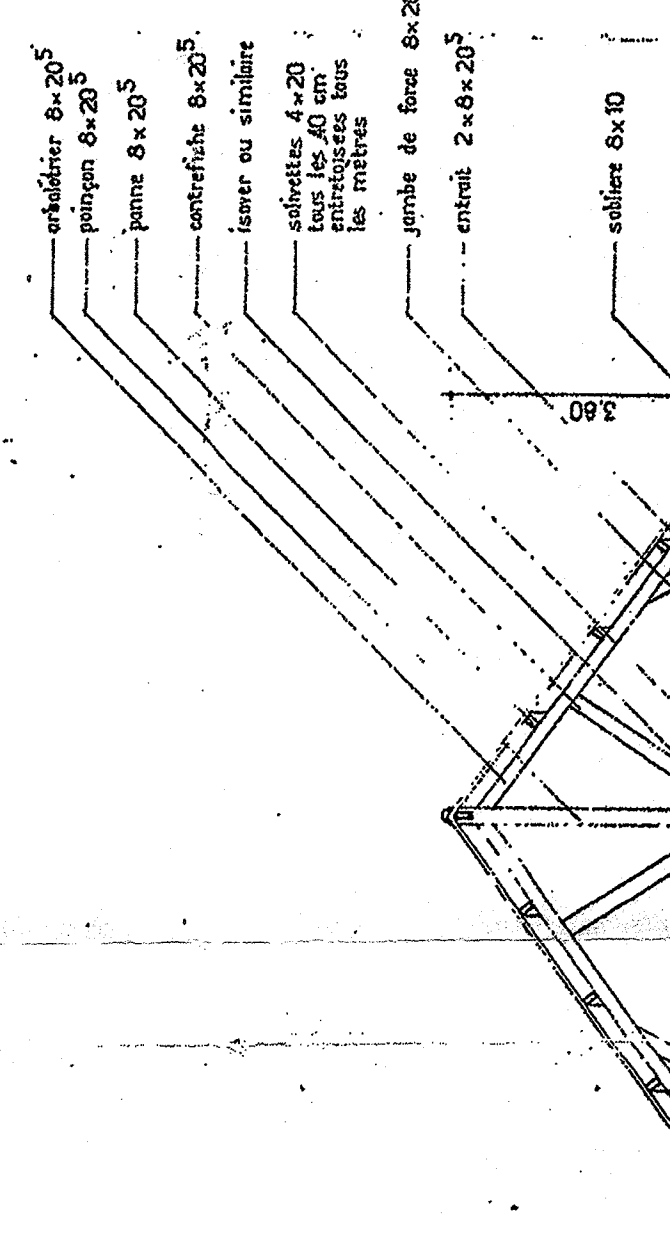
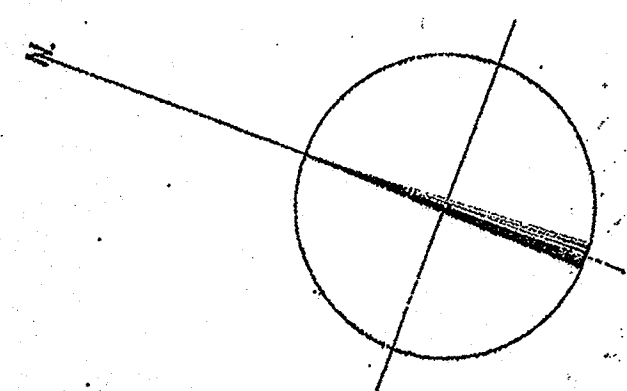
propriété de Monsieur et Madame **Briaud**
à Dangen (Morbihan)
projet de motel

**ETAGE
COUPES
PLAN MASSE**

ech. : 0.01/m.
Vannes le 21/7/1965
L. BARBIER
ARCH. D.P.L.G.

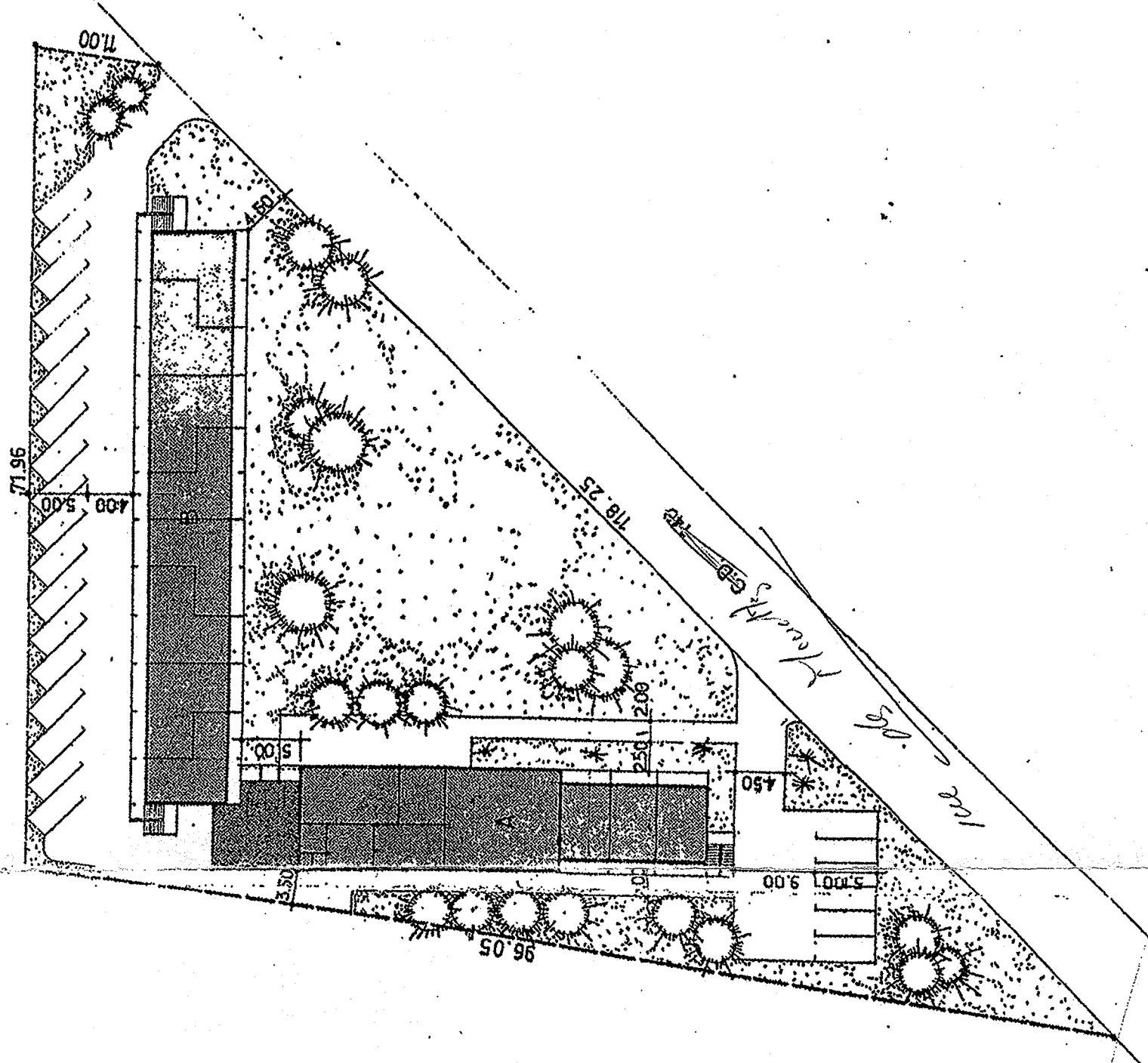


étage



coupe a-a

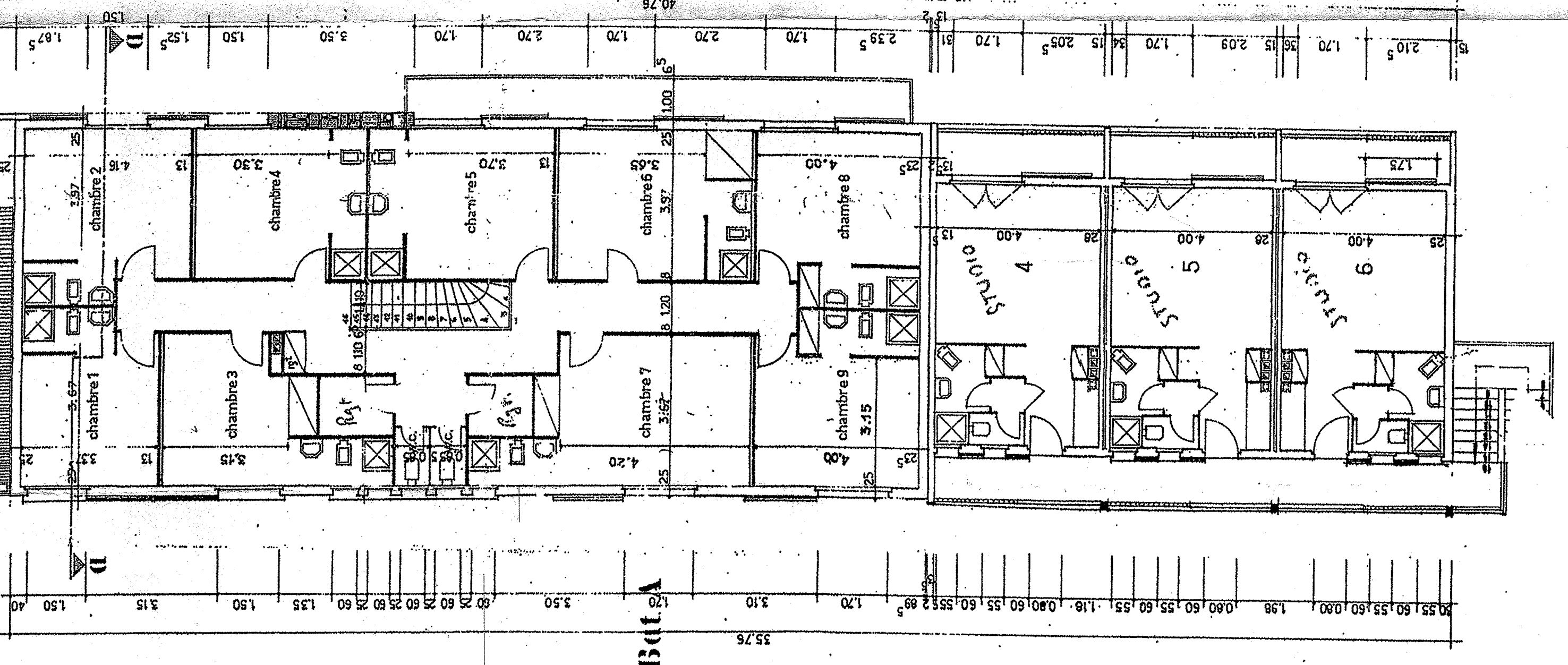
coupe b-b



commune de Dangen
section n° 200
surface: 39 ares
ech. 1:2000/m

Plan de l'architecte

PLAN de masse



Bata