

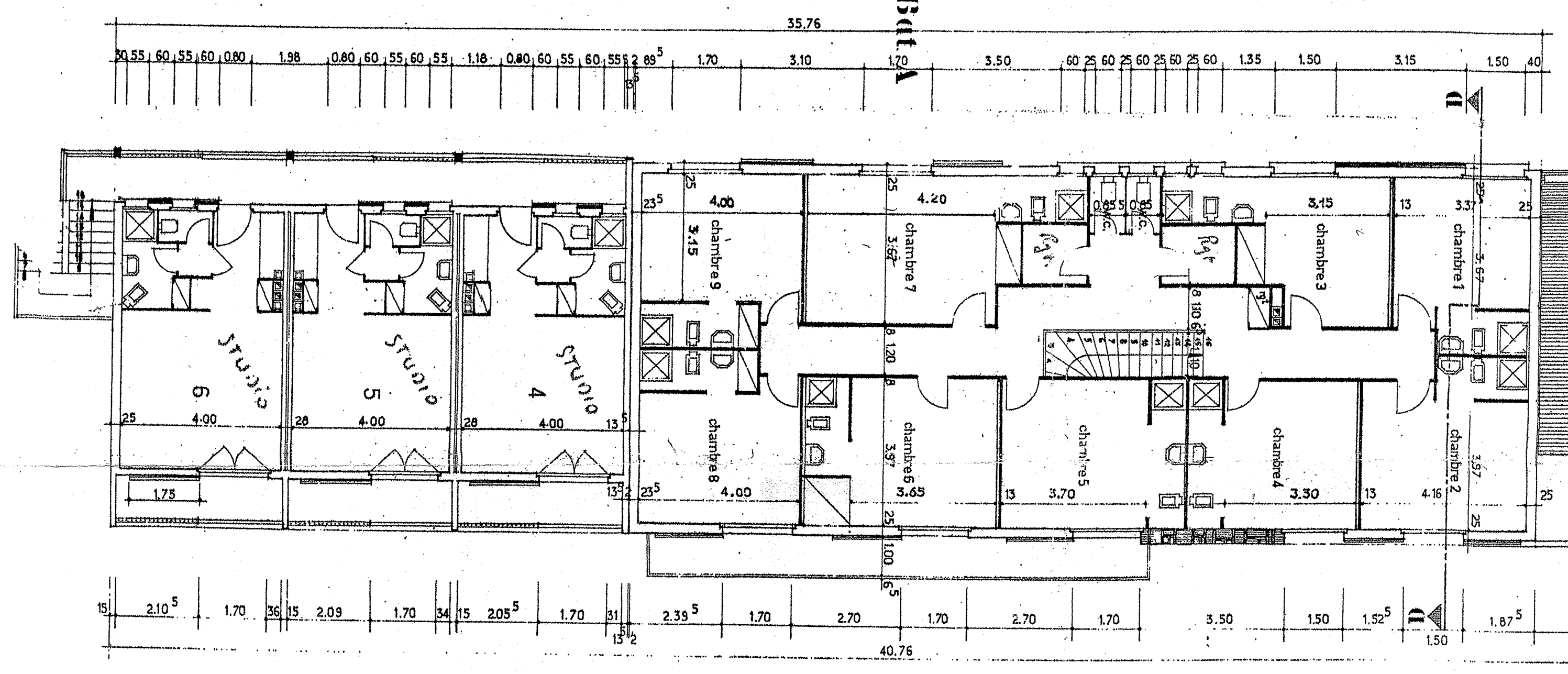
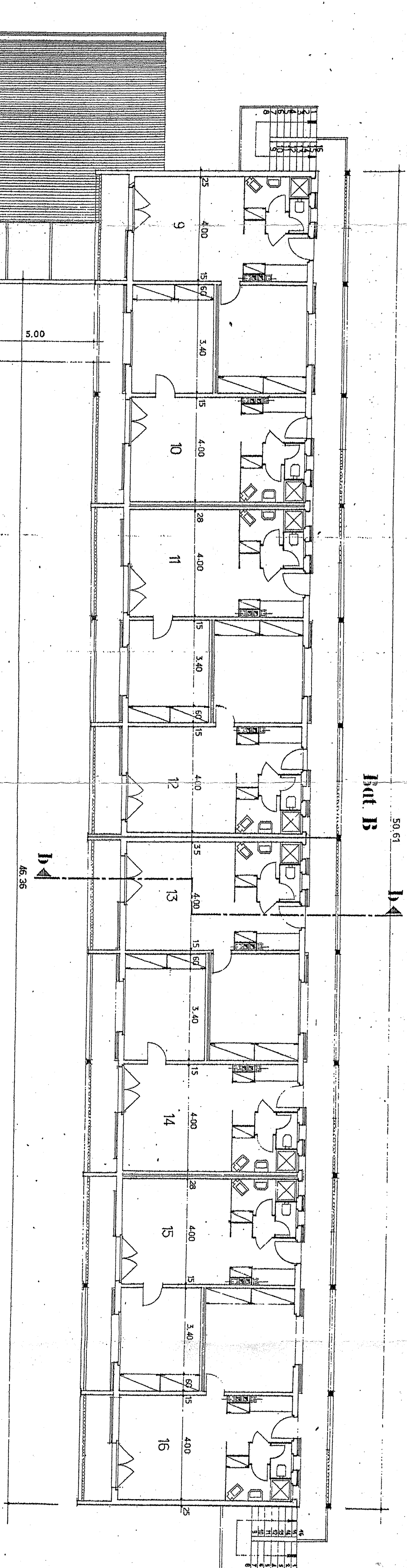


propriété de Monsieur et Madame **Briand**
à Dangen (Morbihan)
projet **le motel**

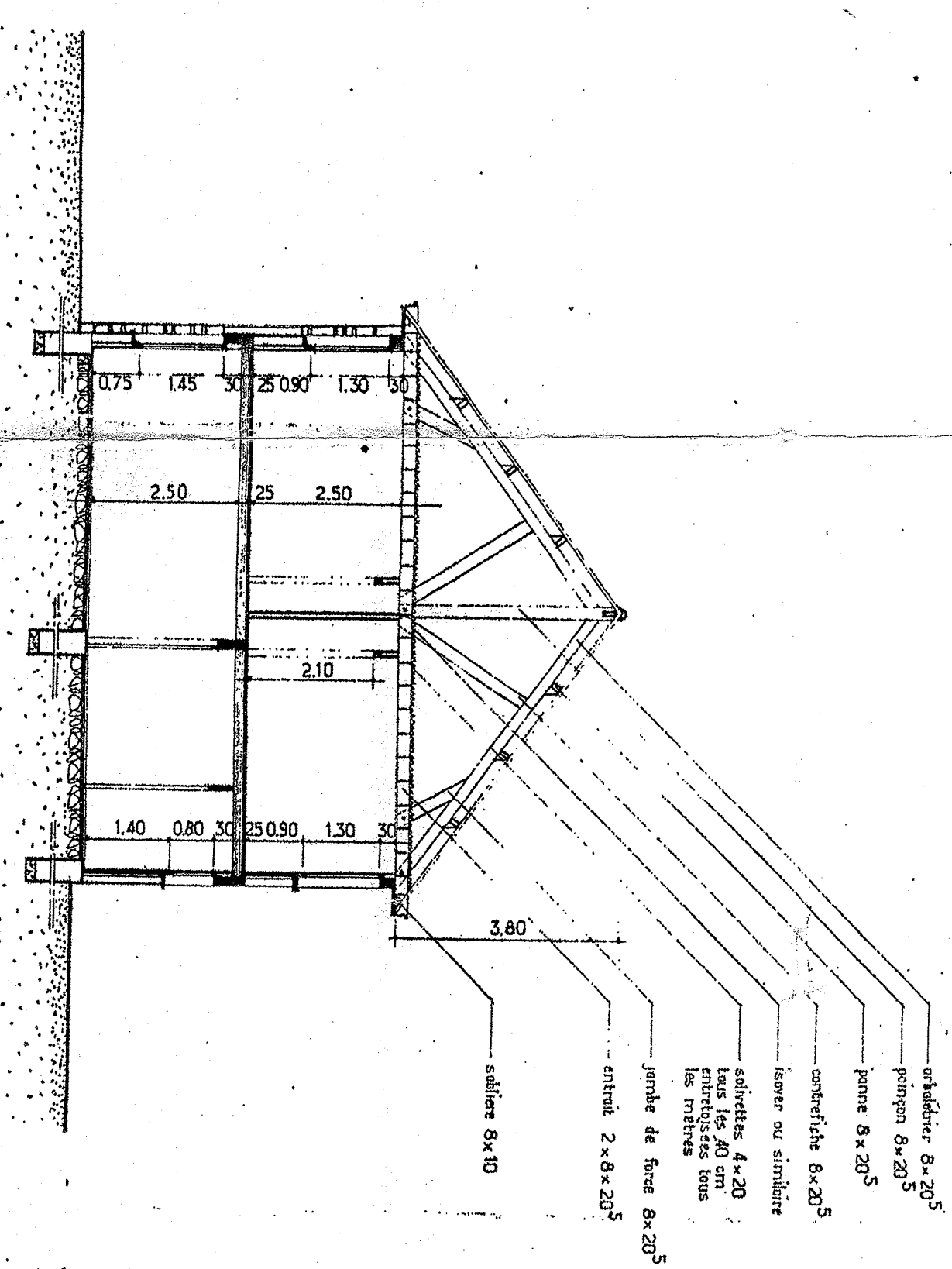
ETAGE
COUPES
PLAN MASSE

ech. : 001/m
Vannes le 21/7/1955

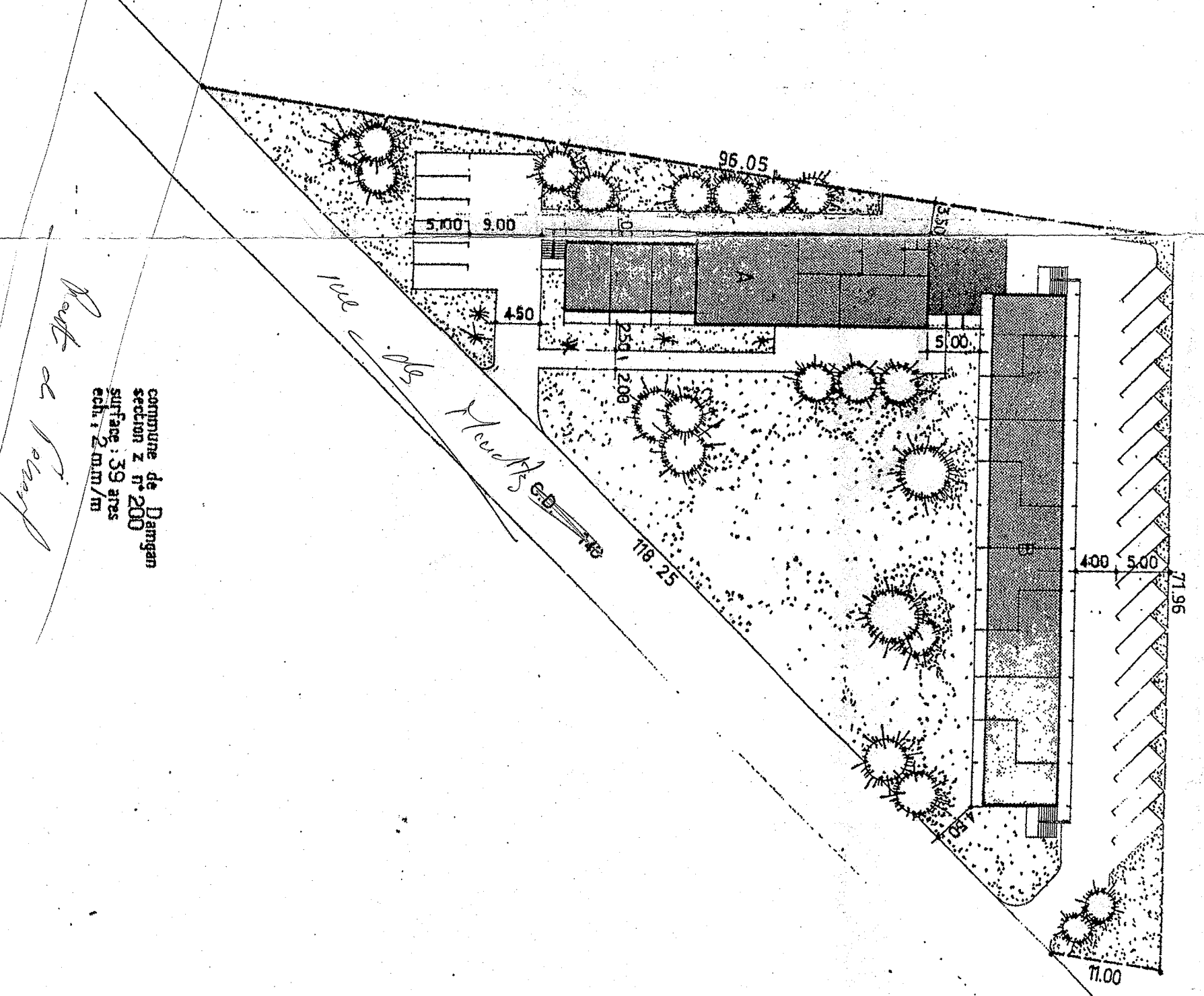
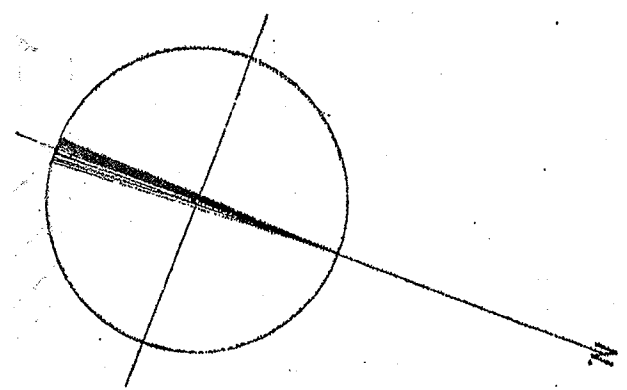
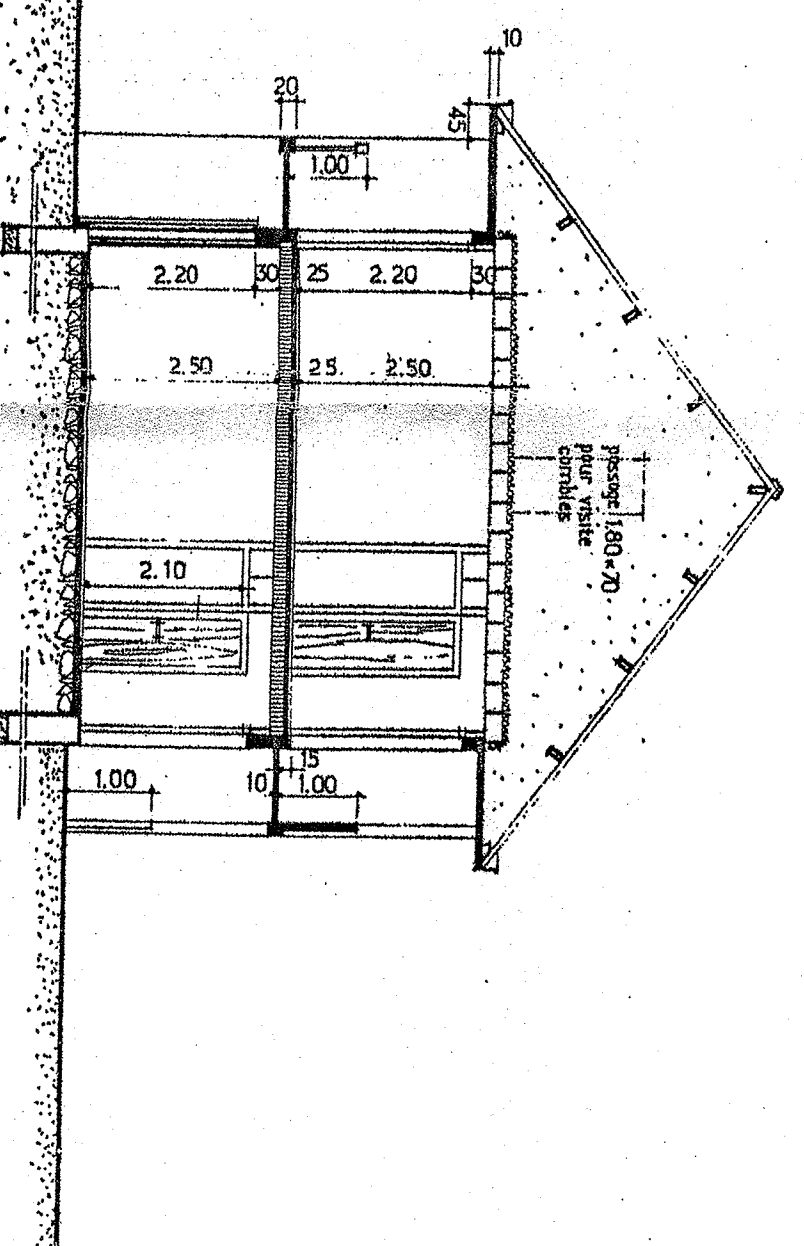
L. BARBIER
ARCH. D.P.L.G.



coupe a-a



coupe b-b



commune de Dangen
section n° 200
surface: 39 ares
cad. 1/20000

PLAN de MASSE